

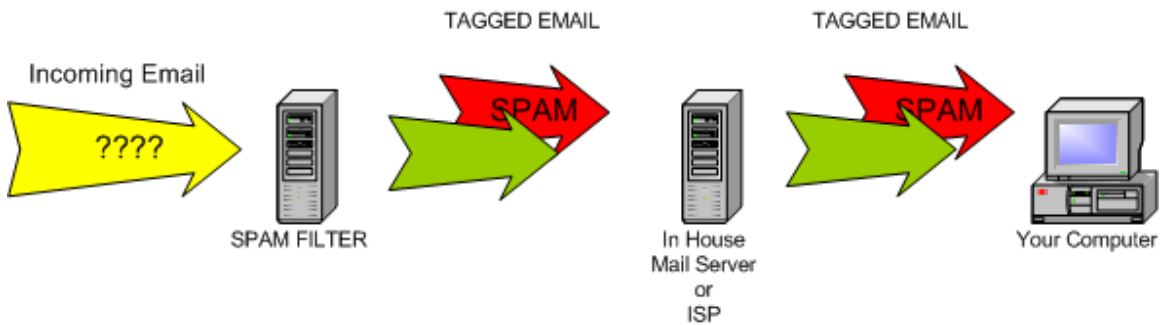


SPAM Reduction Service Setup Guide

Welcome to the EM-Filter Service!

Service Overview:

Here's how it works.



Your Email will pass through the SPAM filter server where it will be analyzed by over 250 different rules and then “tagged” as spam if it’s total score is above the threshold. The Email is then forwarded to your regular mail server where your PC can retrieve it as usual.

Your Email client can now be told to sort the incoming Email based on the tags added by the spam server. All the mail marked as SPAM can be sent to a Junk Email folder or your deleted Items folder leaving just the email you want to receive.



The Details:

What will the “Tag” look like?

The SPAM filter by default will add special headers in the email and also put the characters “*****SPAM*****” in the front of the subject line.

The headers are as follows:

X-Spam-Status: [No | Yes], hits=X.X required=X.X

This header indicates the status of the message whether it is believed to be spam or not. By default a short list of the tests used by the filter are added in this header. By default both SPAM and non-SPAM will have this header.

X-Spam-Flag: YES

This header will appear ONLY in messages considered SPAM

X-Spam-Level: *****

This header is present by default for both SPAM and non-SPAM. The number of asterisks indicates the score.

X-Spam-Checker-Version:

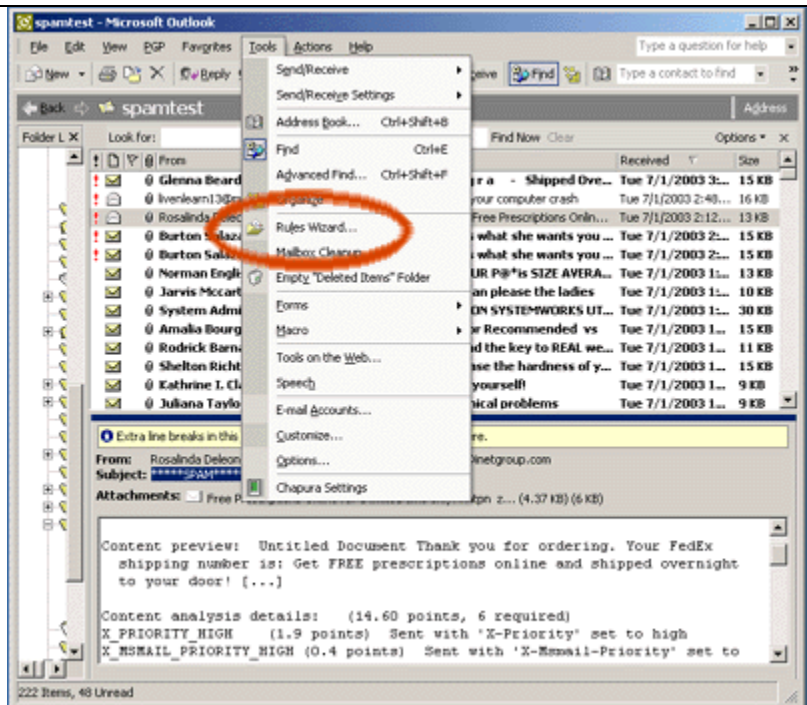
This header shows the current version of the filter software.

So the two most common points to filter on are the X-Spam-Flag: YES and the subject containing “*****SPAM*****”. Most email clients should be able to filter based on one or the other.

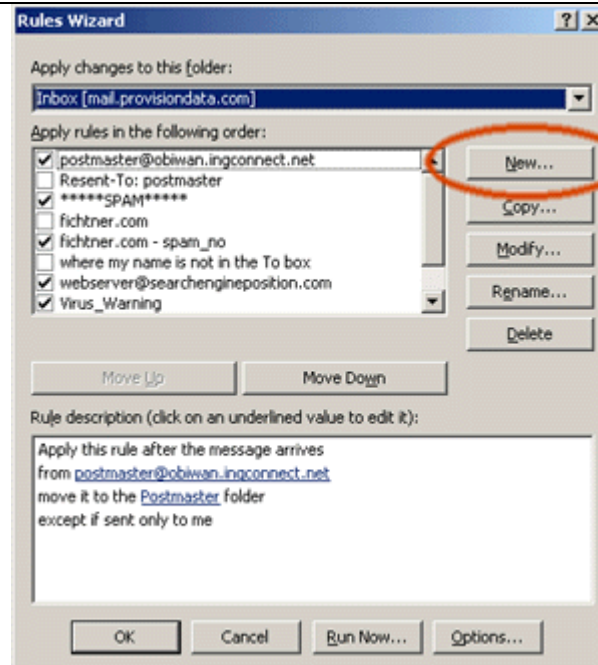
Setting up a Client:

Outlook 2002 (Office XP)

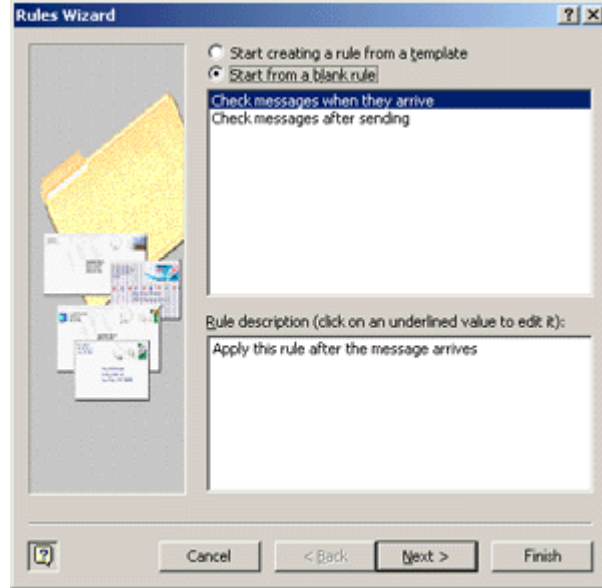
Open the rules wizard.



Select "New...."



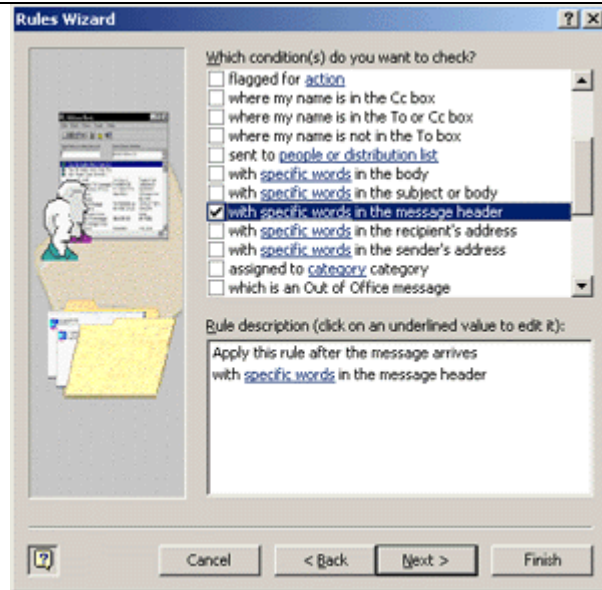
Chose “Start from a blank rule” and select “Check messages when they arrive”.
Click “NEXT”



Select the option “With specific Words in the message header”

This is preferred over the subject to prevent filtering of forwards that may contain “*****SPAM*****” in the subject.

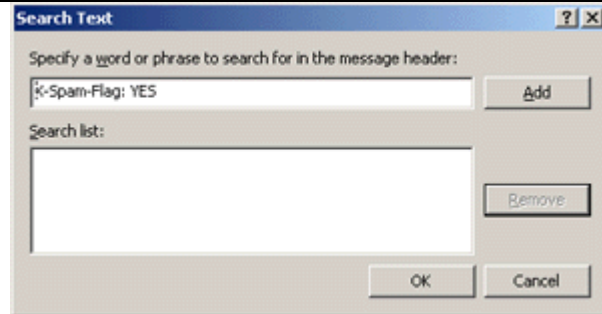
Click on the highlighted “specific words” in the lower section



Enter the words:
X-Spam-Flag: YES

Click “Add”

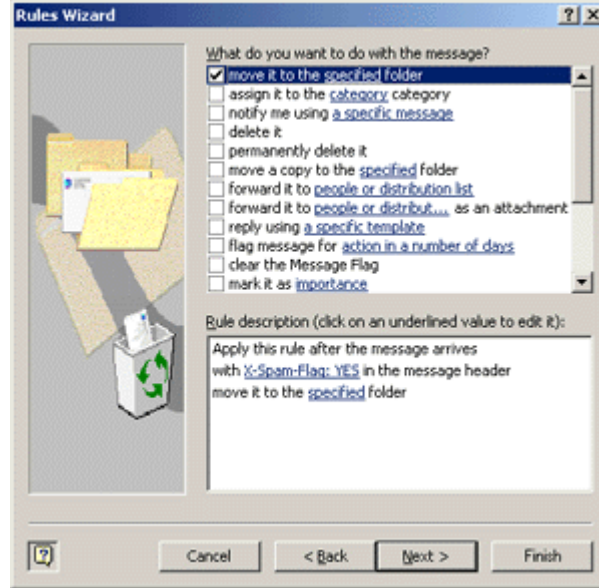
Click “OK”



Click “Next”

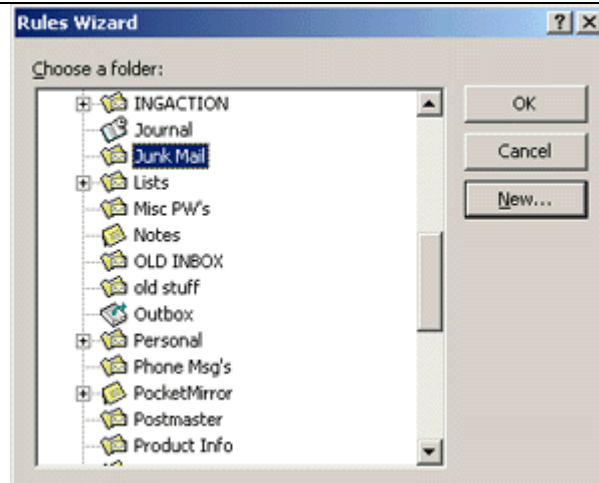
Select “move it to the specified folder”

Click on the highlighted “specified” in the lower section



Choose the folder or create a new one.

Click “OK”

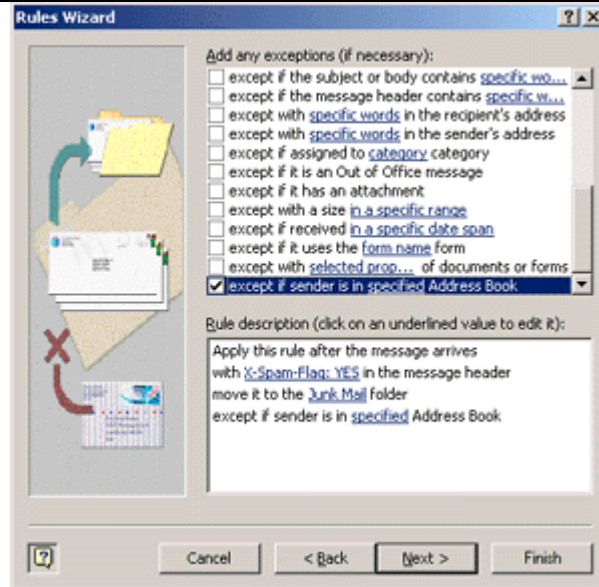


OPTIONAL

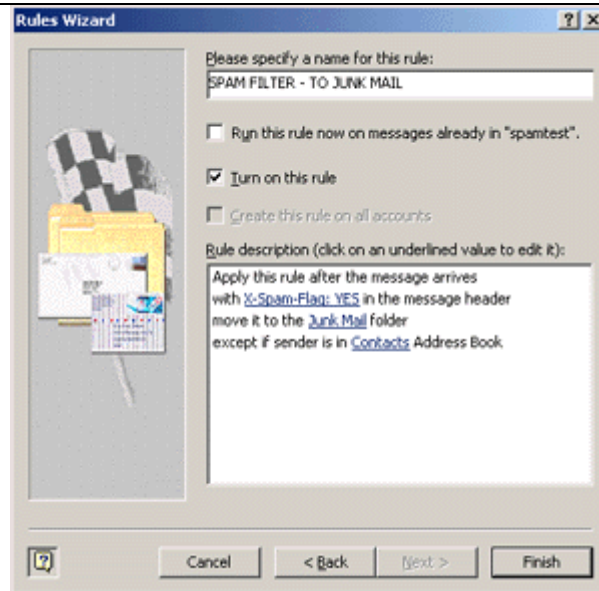
To avoid a false positive from someone you know being moved as spam, Outlook 2002 has the option of making an exception for people in your address book. Earlier versions do not have this option.

Select the option “except if sender is in specified address book”

Choose the address book, click “Next”



Give the Rule a name and click “Finish”



Outlook Express 5:

Coming Soon!